

The Keadby Next Generation Power Station Project

Document Ref: 2.10

Planning Inspectorate Ref: EN0110001

The Keadby Next Generation Power Station Development Consent Order [year]

Land at, and in the vicinity of, the existing Keadby Power Station (Trentside, Keadby, Scunthorpe DN17 3EF)

Indicative Hydrogen Supply Pipeline Connection and AGI Plans

The Planning Act 2008

The Infrastructure Planning (Applications: Prescribed Forms and Procedure) Regulations 2009 Regulation 5(2)(o)

Applicant: Keadby Next Generation Limited

Date: August 2025

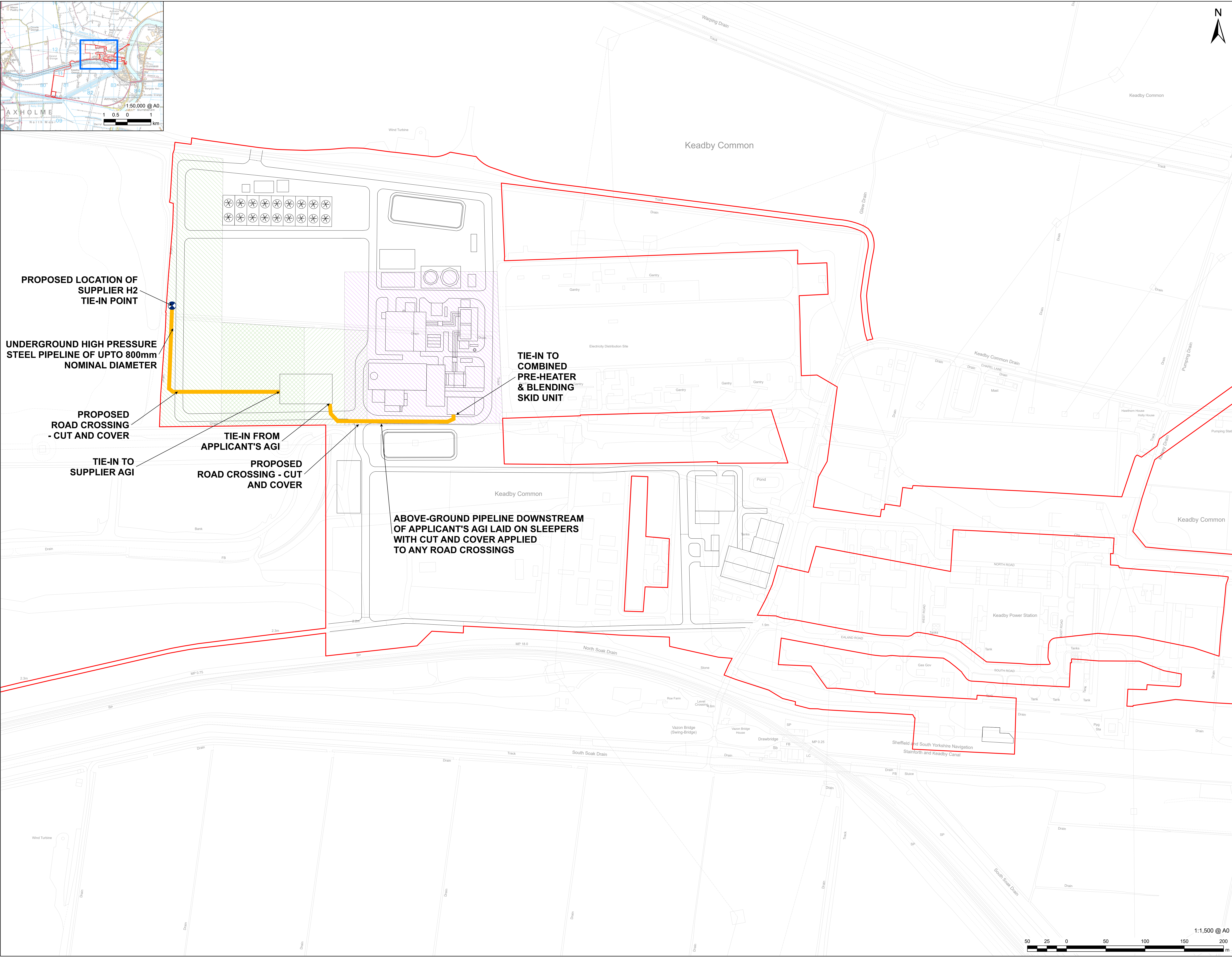
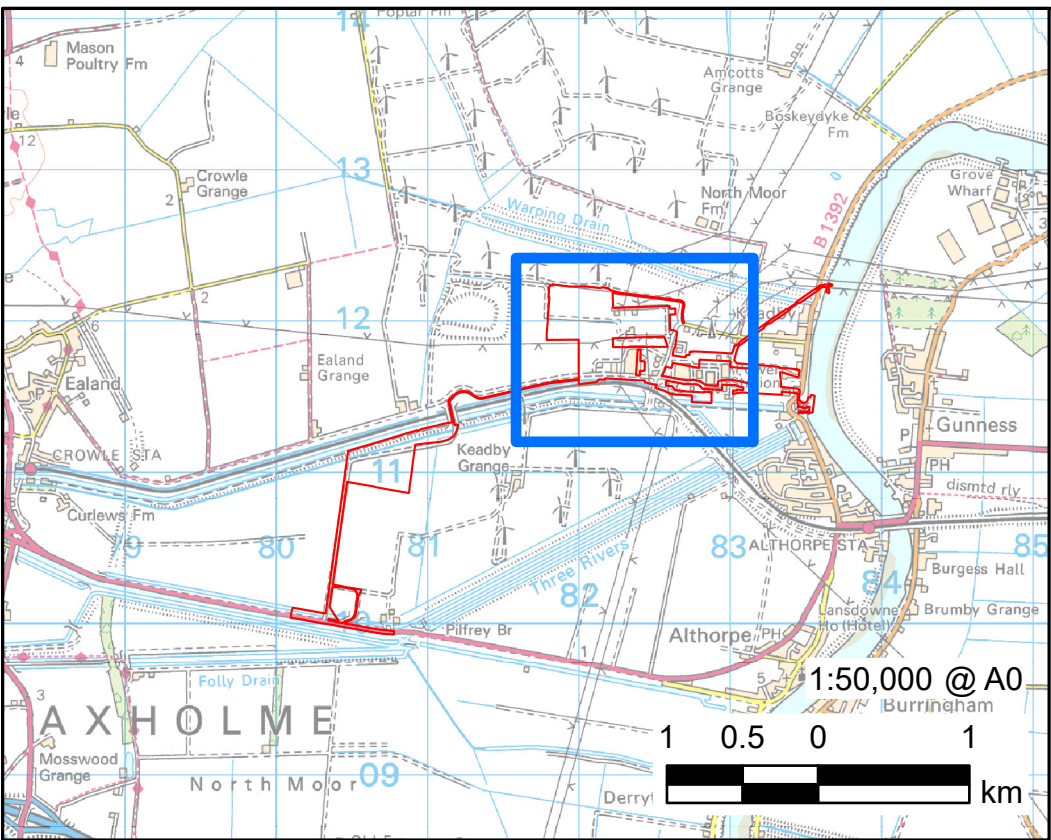
Version: V0

Document History

Document Ref	2.10 / Indicative Hydrogen Supply Pipeline Connection and AGI Plans
Version	V0
Document Owner	AECOM

Revision: 0 Drawn: MAB Checked: SM Approved: GC Date: 2025-09-27

Filename: I:\5004 - Information Systems\60721867_Keadby_Hydrogen_DCO\02_Maps\DCO_Plans\KHy_DCO_Fig_2_1L_HydrogenSupply_R00.aprx



AECOM

PROJECT

**KEADBY
NEXT GENERATION
POWER STATION**
Hydrogen-enabled flexible power

A collaboration between SSE Thermal and Equinor

CONSULTANT

AECOM Limited
Midpoint,
Alencon Link,
Basingstoke, RG21 7PP
www.aecom.com

LEGEND

- PROPOSED DEVELOPMENT SITE (ORDER LIMITS)
- INDICATIVE SITE LAYOUT
- WORK NO. 1A COMBINED CYCLE GAS TURBINE PLANT
- WORK NO. 2A HYDROGEN SUPPLIER'S PIPELINE CONNECTION AND APPARATUS
- WORK NO. 2B APPLICANT'S HYDROGEN APPARATUS
- HYDROGEN CONNECTION ROUTE
- HYDROGEN GAS TIE-IN POINT

NOTES

Reproduced from Ordnance Survey digital map data © Crown copyright 2025. All rights reserved.
Licence number AC0000808122.

Keadby Next Generation Power Station - Schedule 1 - Authorised Development. In the Borough of North Lincolnshire, a nationally significant infrastructure project as defined in sections 14(1)(a) and 15 of the 2008 Act and associated development.

APPLICATION REFERENCE

Application Document Ref. 2.10

ISSUE PURPOSE

DCO APPLICATION

PROJECT NUMBER

60721867

SHEET TITLE

Indicative Hydrogen Supply Pipeline Connection and AGI Plans

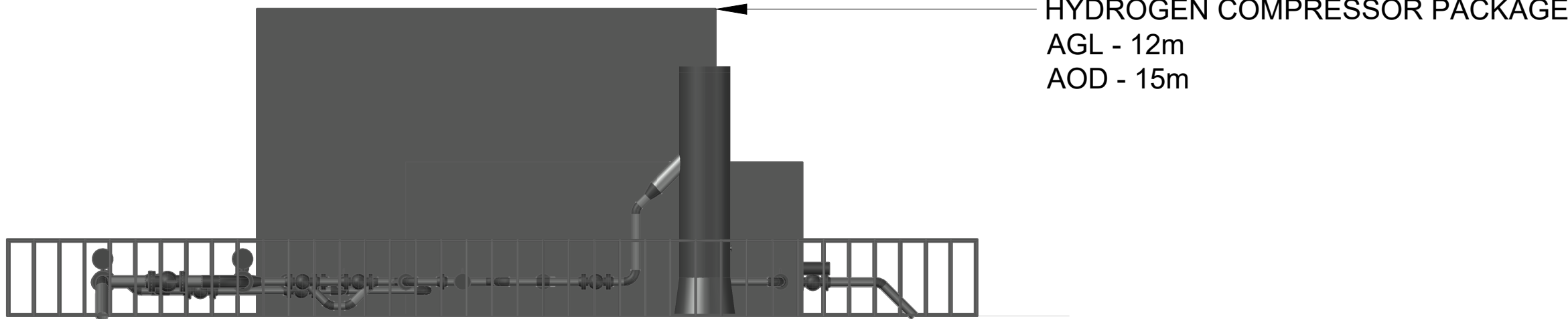
SHEET NUMBER

Sheet 1 of 3

1:1,500 @ A0



C:\Users\Scoring\AECOM\Keadby Hydrogen Feasibility - General\Pre-Feed\040_CAD_GS6920_GIS04_Outgoing\DCO_Plans\AS_UPDATES_2025_06_26\210\Keadby H2 AGI Elevation Drawings

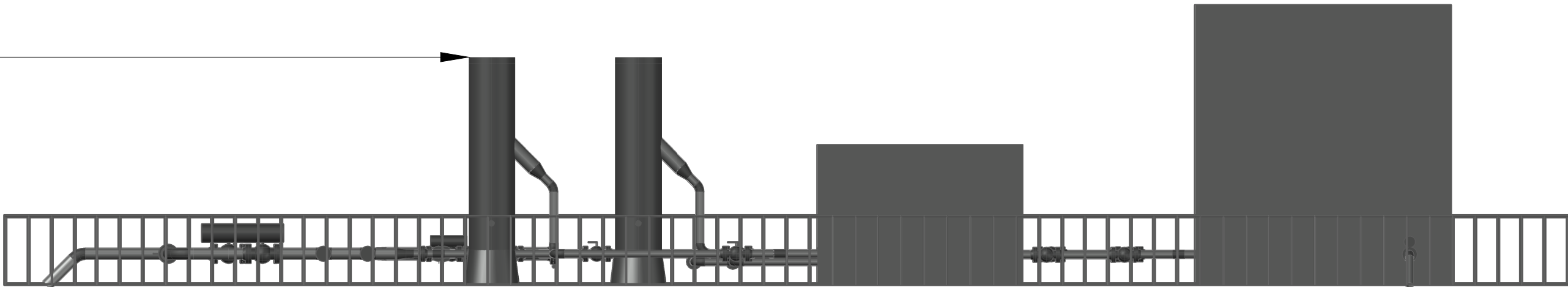


HYDROGEN COMPRESSOR PACKAGE
AGL - 12m
AOD - 15m

WEST ELEVATION

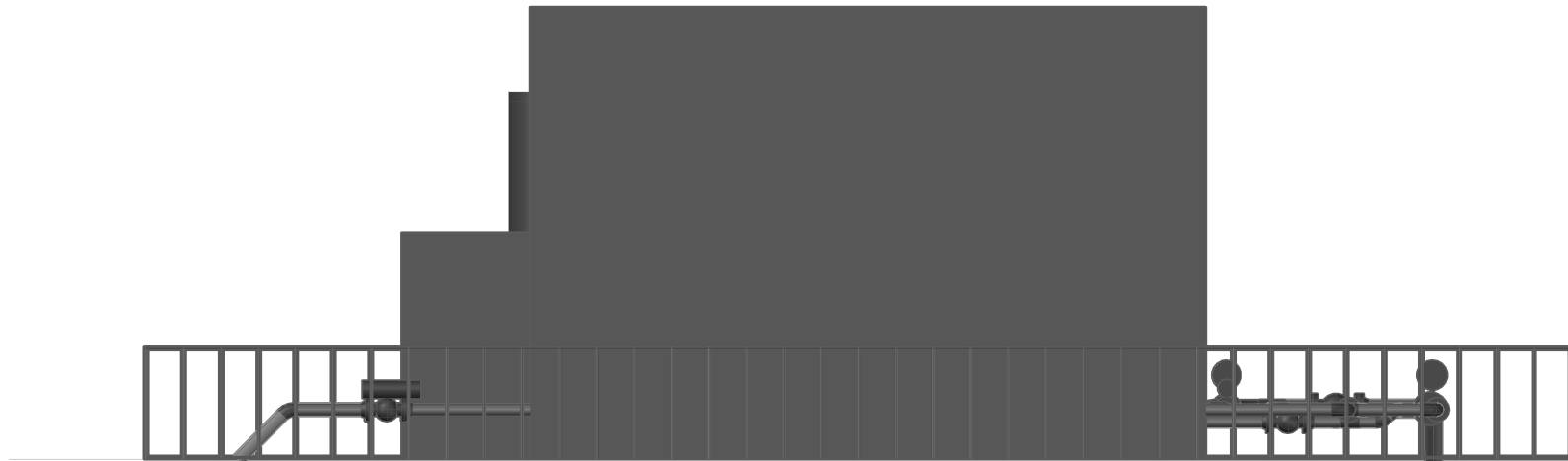
SCALE: 1:200

COALESCING FILTERS
AGL - 10m
AOD - 13m



SOUTH ELEVATION

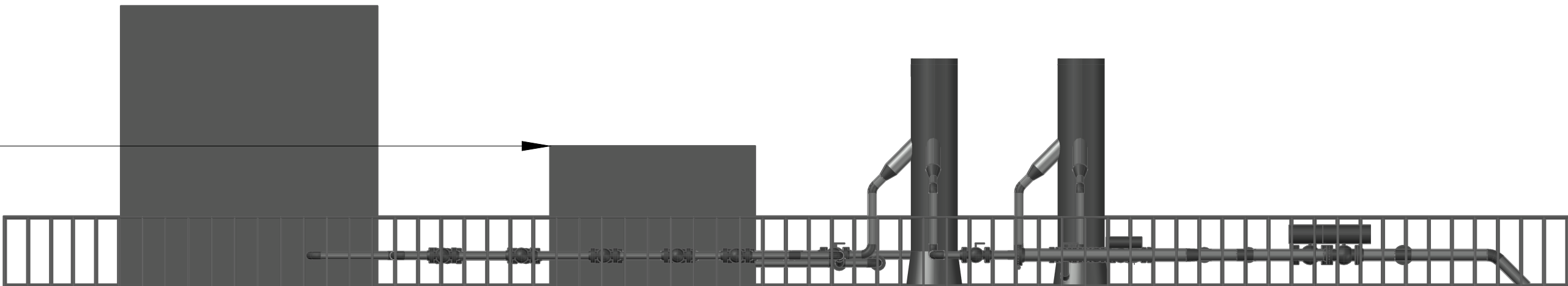
SCALE: 1:200



EAST ELEVATION

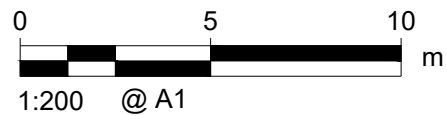
SCALE: 1:200

METERING BUILDING
AGL - 6m
AOD - 9m



NORTH ELEVATION

SCALE: 1:200



NOT FOR CONSTRUCTION
FOR INFORMATION ONLY



PROJECT

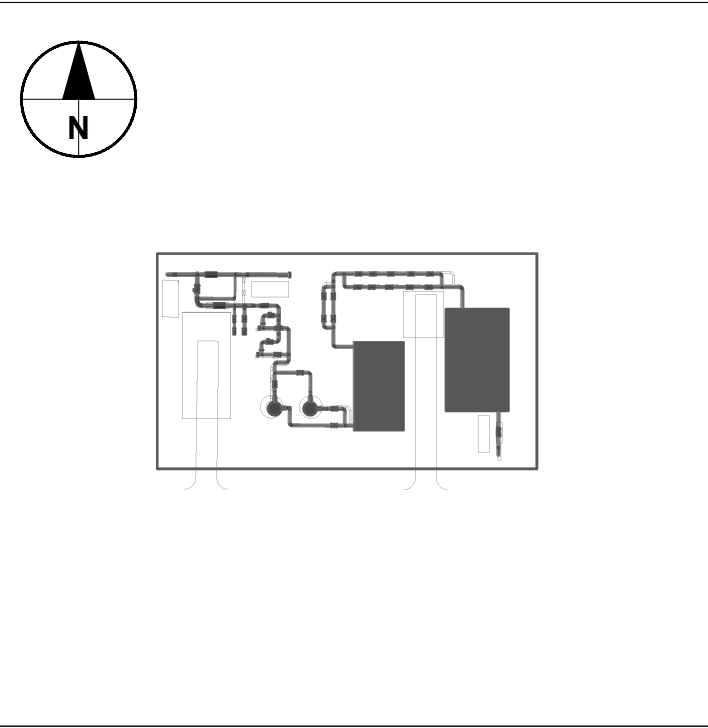
KEADBY
NEXT GENERATION
POWER STATION
Hydrogen-enabled flexible power

A collaboration between SSE Thermal and Equinor

CONSULTANT

AECOM Limited
Midpoint,
Alencon Link,
Basingstoke, RG21 7PP
www.aecom.com

LEGEND



NOTES

Reproduced from Ordnance Survey digital map data © Crown copyright 2025. All rights reserved. Licence number AC0000808122.

Keadby Next Generation Power Station - Schedule 1 - Authorised Development. In the Borough of North Lincolnshire, a nationally significant infrastructure project as defined in sections 14(1)(a) and 15 of the 2008 Act and associated development.

APPLICATION REFERENCE

Application Document Ref. 2.10

ISSUE PURPOSE

DCO APPLICATION

PROJECT NUMBER

60721867

SHEET TITLE

Indicative Hydrogen Supply Pipeline Connection and AGI Plans - Elevation Drawing

SHEET NUMBER

Sheet 2 of 3

NOTES

Reproduced from Ordnance Survey digital map data © Crown copyright 2025. All rights reserved.
Licence number AC0000808122.

Keadby Next Generation Power Station - Schedule 1 - Authorised Development. In the Borough of North Lincolnshire, a nationally significant infrastructure project as defined in sections 14(1)(a) and 15 of the 2008 Act and associated development.

APPLICATION REFERENCE

Application Document Ref. 2.10

ISSUE PURPOSE

DCO APPLICATION

PROJECT NUMBER

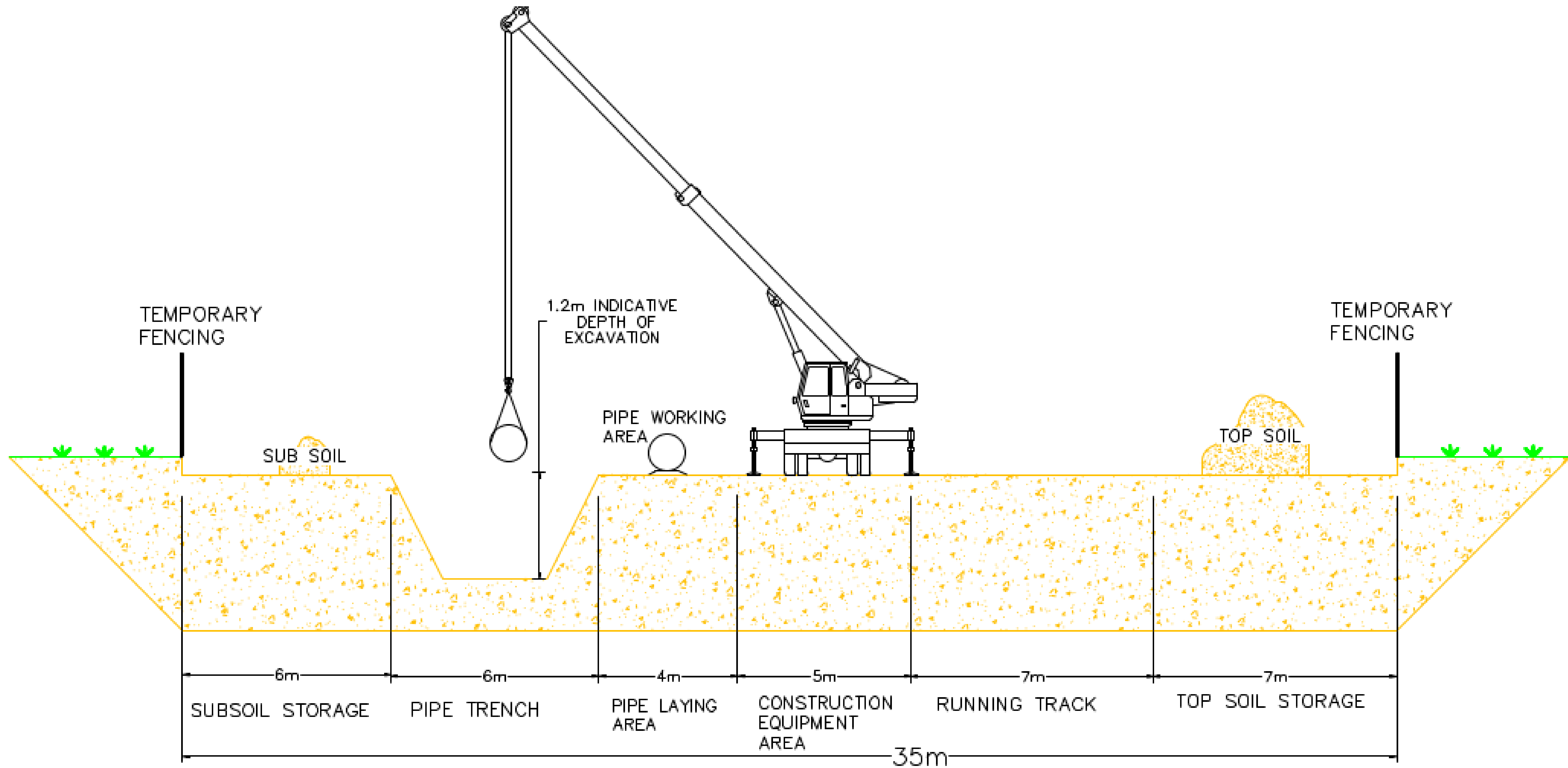
60721867

SHEET TITLE

Indicative Hydrogen Supply Pipeline Connection and AGI Plans - Typical Construction Section

SHEET NUMBER

Sheet 3 of 3



NOT FOR CONSTRUCTION
FOR INFORMATION ONLY